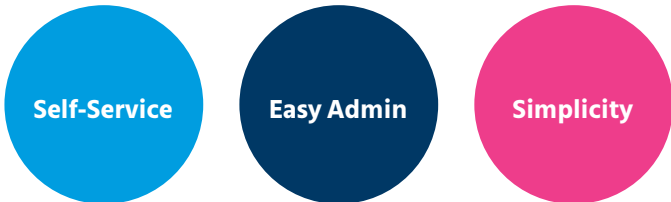


Welcome to Elect Engage

What is Elect Engage?

Launched in June 2019, this **free** online employee benefits management platform offers:



Who is Elect Engage for?

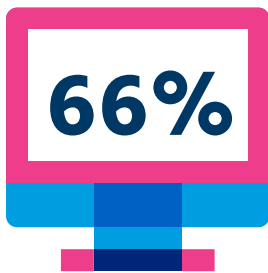
Any of the amazing **5 million** SME businesses in the UK employing up to **100 people**.

elect engage
by Mercer Marsh Benefits

Six reasons to consider Elect Engage...

1 Strong case for online benefits management

- **66%** of employers are looking to invest in a digital solution in the next 3 years
- Elect Engage can save your business time in dealing with administration and employee benefits queries



2 Benefits available in our online store include:



Private Medical Insurance



Group Life



Canada Life

Group Income Protection



Pension – SIPP

We work with some of the leading UK providers

3 Free additional benefits:



Dental Cover - level 1



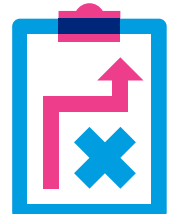
Health Assessment



Flu Jabs for Employees
For all clients who take up PMI

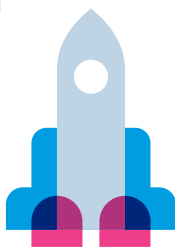
4 Low barriers to adoption

- **Slick on-boarding service** including data quality check and curation
- Support available to help you quickly configure your account

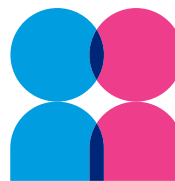


5 Business Continuity Plan

- A **digital solution** that is accessible **anywhere**
- **Store HR contacts**, staff contacts, and backup document storage



6 Central storage of benefits and company policies and procedures



- **Policies and procedures** can be stored on the system
- Free storage up to **20 GB**
- **24/7 instant access** for all employees

Why is this good for my business?

- Free HR & Benefits platform with centralised storage
- Stay ahead of the competition
- Employees will value an additional benefit at no cost to your business
- Slick on-boarding service
- Enhances your businesses continuity plans
- Reduces number of benefits and company policy queries
- Quick and simple quoting and purchasing of key benefits

- We securely host your documents for free
- Share benefits details with your employees easily
- Retain, engage and empower your employees, which may boost productivity and achieve better results
- Support mental health with free Employee Assistance Programs
- Access Engage:
www.electemployeebenefits.co.uk/signup.html

Questions?

Get in touch with us on **0800 023 2785**.